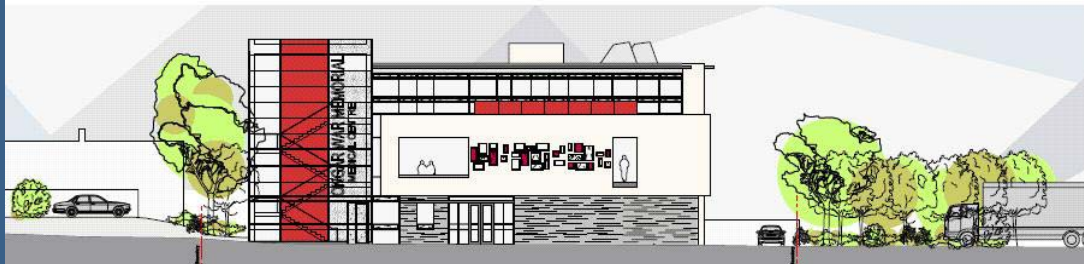


STOP PRESS – Congratulations to 'The Grand Slammers' (including Robert F, Nigel R, Jerry G, Steve Andrews & Barry Land) on winning the Chairman's Charity Quiz (for the 11th time?).

Well done to our 'Flatliners' 5-a-side football team (including Robin H, Kevin W and Nigel R) who beat Stace (multiple title winners, and current league leaders)!



Indicative plan for Ongar War Memorial Development – see Development Control section

Welcome to the first edition. The editor invites you to give him feedback on content and even the title! Please contact via:

ThePlanIt@eppingforestdc.gov.uk



Coffee/cake fundraisers

The DCC team would like to know, how many do you think we should have per year? E.g. 2, 3, 4 or 5?? Please let us know via Robin or Sarah K.

Admin team – our focus this month

NEW FACES IN SCANNING - **Dominique Pharoah** and **Selvina Poric** join us temporarily to help with the backscanning of the planning files. With over 90% of the files now scanned and online, they will be helping to scan the remainder of the 2008 and the 2007 files.

MUSICALITY - **Chris Redman** will be tickling the ivories again at Harlow Playhouse on 4th March, accompanying the classic Buster Keaton movie Steamboat Bill Jr (the one where the house falls down around him at the end) as part of The Playhouse's Film Festival. Tickets are now on sale. **Carol Ferrary** sings bass in a 65-member Wanstead Rock Choir. Decca has recently cut the Choir's record, and there are plans to perform at the Royal Albert Hall.

ACHIEVEMENTS - Congratulations to **Elaine Grimwood** on successfully attaining her Photography A Level at Epping Forest College, after 2 years hard work on the course. In celebrating the 40th anniversary of the Riding for the Disabled Association, **Kathy Howell** received a Long Service Award from HRH Princess Anne, for her sterling work as a helper at Chigwell Riding Trust. **Melinda Barham** and **Victoria James** also help at the Riding School.

Building Control

Robin Saunders reports that the BC team have secured the Building Control aspect of a multi-million pound project for the Bank of England. Works are due to commence in early March. Strict security prevent further disclosures!

Congratulations to **Barry Hill** on his recent 60th birthday. Following the presentation of his birthday gift, a sparkling zimmerframe, Barry (60) was visibly moved!

John Kershaw recently enjoyed a Texan road trip holiday. On being quizzed about his trip, he responded by saying, "I am sorry that 56lb steaks remain unavailable in this country".

Development Control

Contentious War Memorial Redevelopment

Officers are considering an application for redevelopment of the War Memorial Hospital in Ongar (see above). The proposed new Health Centre will retain war memorial status and continue to hold remembrance ceremonies. Is the design contemporary, striking, ugly, or inappropriate?

Mothercare and Pet Superstore at Waltham Abbey
Planning permission has recently been granted for Mothercare and Pets at Home to open at Highbridge Retail Park, Waltham Abbey.

Planners say "No" to golf course

A recent County Matters application for additional 18 and 9 hole golf courses at Blakes Golf Course, North Weald was objected to at District Development Control Committee on 10 grounds. The application is now with Essex County Council.

LIDL grand opening

Also new to Waltham Abbey is a Lidl discount store, which was granted planning consent in 2009, and opened on the 25th February.

Interviews getting to know...

Peter Millward – Business Manager since Nov 09

Peter previously worked at Nottingham City Council from 2000 – 2009, as Senior Administrative Officer in Children's social care. He moved to the area partly because he wanted to work in a small friendly authority.

Peter sees his role at EFDC as supporting the Directorate in providing high quality technical and administrative service to all our customers and residents in the District.

Pam Barnes – Planning Receptionist

Pam has been a cover Receptionist since her retirement from the Benefit section in 1997. She has also been a poll clerk and issued bus passes! Pam enjoys taking her 4 grandchildren to see her sister in Spain. She also enjoys walking, the theatre, and did start belly dancing, but put her back out!

Enforcement

Sharon Hart has recently secured the removal of an unauthorised conservatory in the Green Belt at Red Cottage, New Farm Drive. On the same road, **Don Andrew** pursued enforcement action against unauthorised caravans, containers and a fence at New Farm Cottage – the applicant's appeal was lost, and as they did not comply with the notice, the matter will go to court on the 12th of March. **Clare Munday** has been dealing with unauthorised works to the listed property 85 High Street, Ongar. An enforcement notice was served, and the landowner prosecuted, and ordered to pay £5000 plus costs. **Dave Thompson** handled a case of the unauthorised grubbing out of a hedgerow at land adjacent to 62 Hoe Lane, leading to a prosecution at Harlow Court. The perpetrator subsequently appealed, and the case is going to Chelmsford Crown Court.

Forward Planning

Work on the Development Plan Document for new pitches for Gypsies and Travellers is on hold at present, while we wait for a meeting with the Government Minister. We are working with officers in East Herts and Harlow, to co-ordinate plans for housing growth around Harlow, which will be expressed in our Local Development Framework Core Strategy.

FP have enjoyed having **Paula Onyia** in their team on secondment, and will miss her on her return to Development Control as a newly appointed Senior Planning Officer. **Kevin Wright**, **Alex Sleet**, **Vicki Willis** and **Sarah King** are all studying part-time for planning-related Masters'. They are studying Urban Design, Conservation of Buildings and Town Planning (x2) respectively.

Environmental Issues

A successful event was held in the High Street on February 16th with the Energy Saving Trust. It was a chance for local businesses, EFDC staff and Chairman Mrs Penny Smith to learn Smarter Driving. Driving in a 'smarter' style reduces fuel consumption by up to 15%, releasing less CO2 and also saving money! Work on a Key Line of Enquiry (KLoE) report for the Audit Commission is ongoing. **Sarah Creitzman** is collecting evidence on the Council's use of natural resources including electricity, gas, water and other materials. The KLoE will also assess how we are engaging our staff in environmental issues.

Trees & Landscape, and Countrycare

Tree O'Clock (see photo) was part of BBC Breathing Places five year campaign to encourage all of us to get outside and make space for nature. In December members of Trees and Landscape and Countrycare took part in a world record breaking national tree planting event. Over 20,000 trees were planted!!!

All Essex County Council TPOs are to be revoked by the end of March 2010. In order to ensure that important trees remain protected, new TPOs need to be made. The extra push to complete this major task has led us to take on **Tom McCarthy**, **Anneka Johnson-Marshall**, and a tree surveyor, **Judith Moore** to bolster the team.

Countrycare won grants to restore ponds in Nazeing and pollard trees at Chigwell Row Wood. The team has put 30 Local Wildlife Sites into positive conservation management, and has planted almost 1km of hedge with local school groups.

The Countrycare team welcomed new assistant **Nicola Rogers**. Her interest in wildlife started with volunteering work at St. Tiggywinkles Wildlife Hospital! Nicola experience gained while training with the Oxfordshire Wildlife Trust (BOWT) at university.

Conservation

There has been application to English Heritage to delist Thrift Cottage (Grade II) property which is currently being assessed by English Heritage. The refurbishment of Gaynes Park Mansion has now commenced. Hopefully, this should result in the property being removed from the next edition of the English Heritage At Risk Register.

Lizzy Haines, aided by **Elaine Duddy** (now working in the city), have recently produced detailed Conservation Area Appraisals and Management Plans for Bell Common, and Epping. A character appraisal assesses topics such as public space, local history, key views, and sites with development potential. Please see 'Heritage Conservation' on our website.



Stay Classy, Epping Forest... A judge, a bishop and a planning consultant were talking. They wondered, who was the greatest? The judge said, "when I walk into the courtroom, the bailiff says 'All rise!' and all the people stand to pay me honour." The bishop said, "when people come to me they kneel, and call me 'Your Eminence.'" The consultant snorted and said, "When I walk into any room, people throw their hands up say "oh, my God!"

Economic Development

Cathy MacBride will be providing temporary cover for the Town Centres Officer post shortly. She will work on specific projects, liaising with **Vicki Willis**, helping to encourage local business and stimulate partnerships in our town centres. Work on the St John's (Epping) area Development Brief is continuing, specific effort is being invested to ensure this is aligned with current Town Centres Study work. A programme of business engagement events has been scheduled for the year, the first is a briefing on new rateable values on 23rd March.

